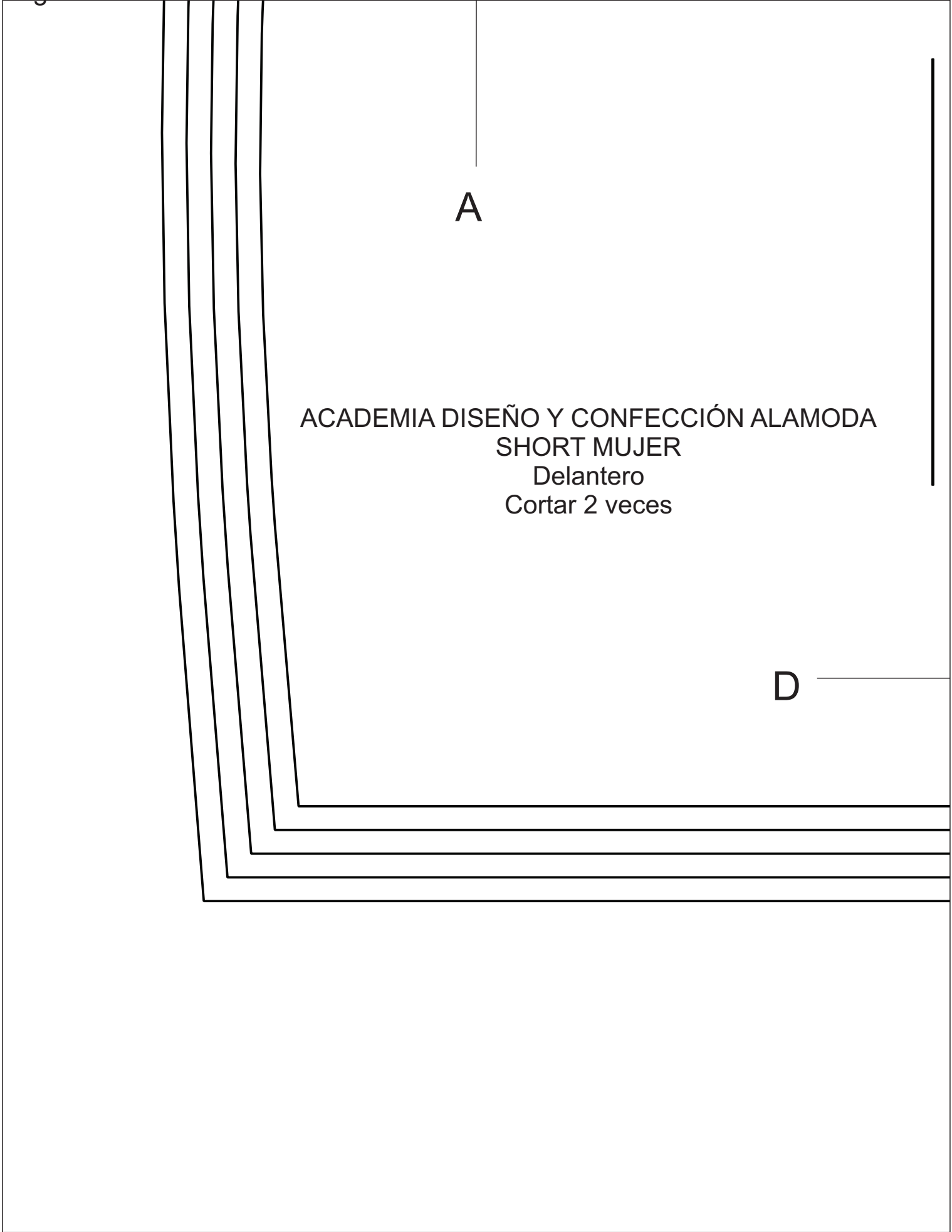


A

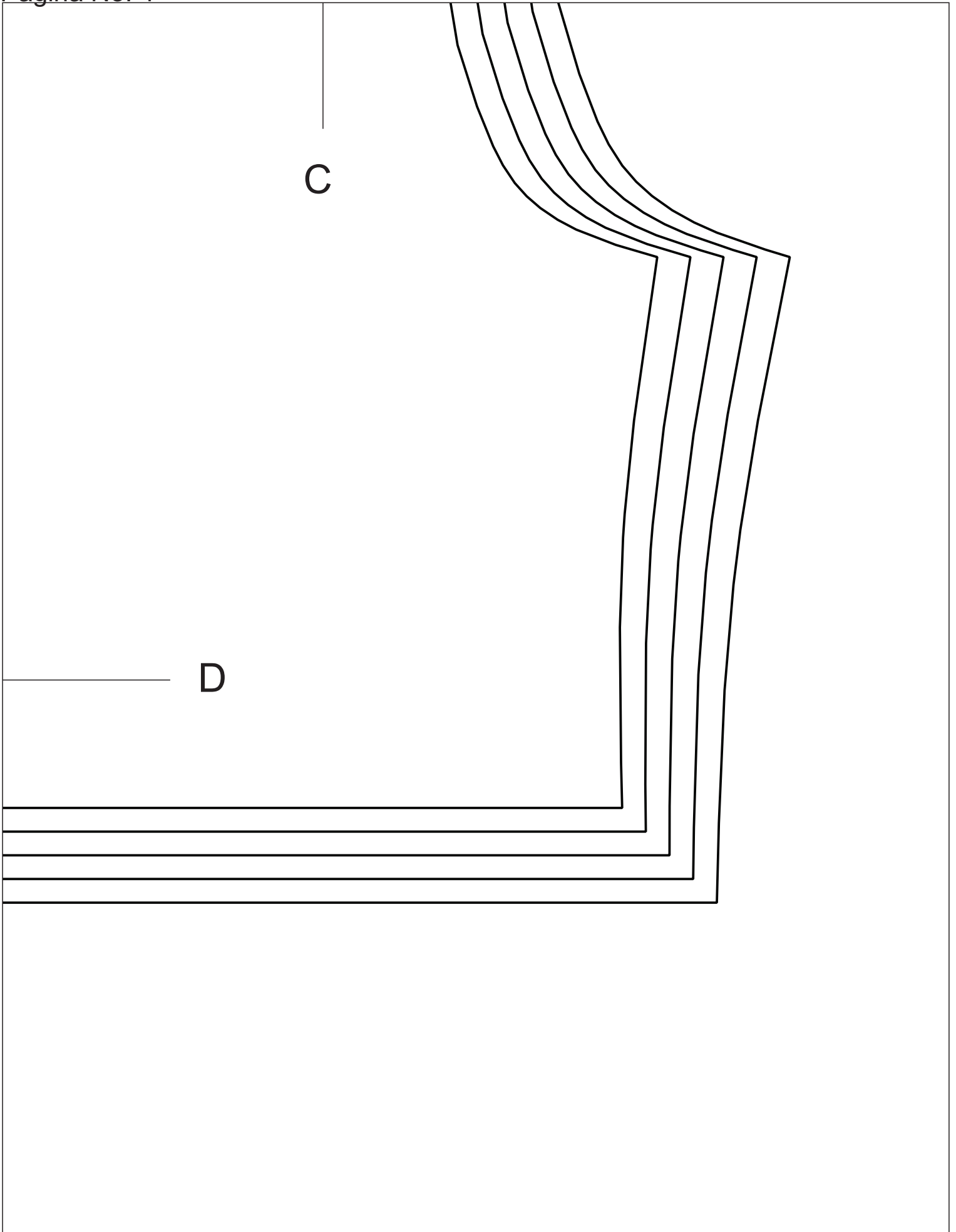
ACADEMIA DISEÑO Y CONFECCIÓN ALAMODA
SHORT MUJER
Delantero
Cortar 2 veces

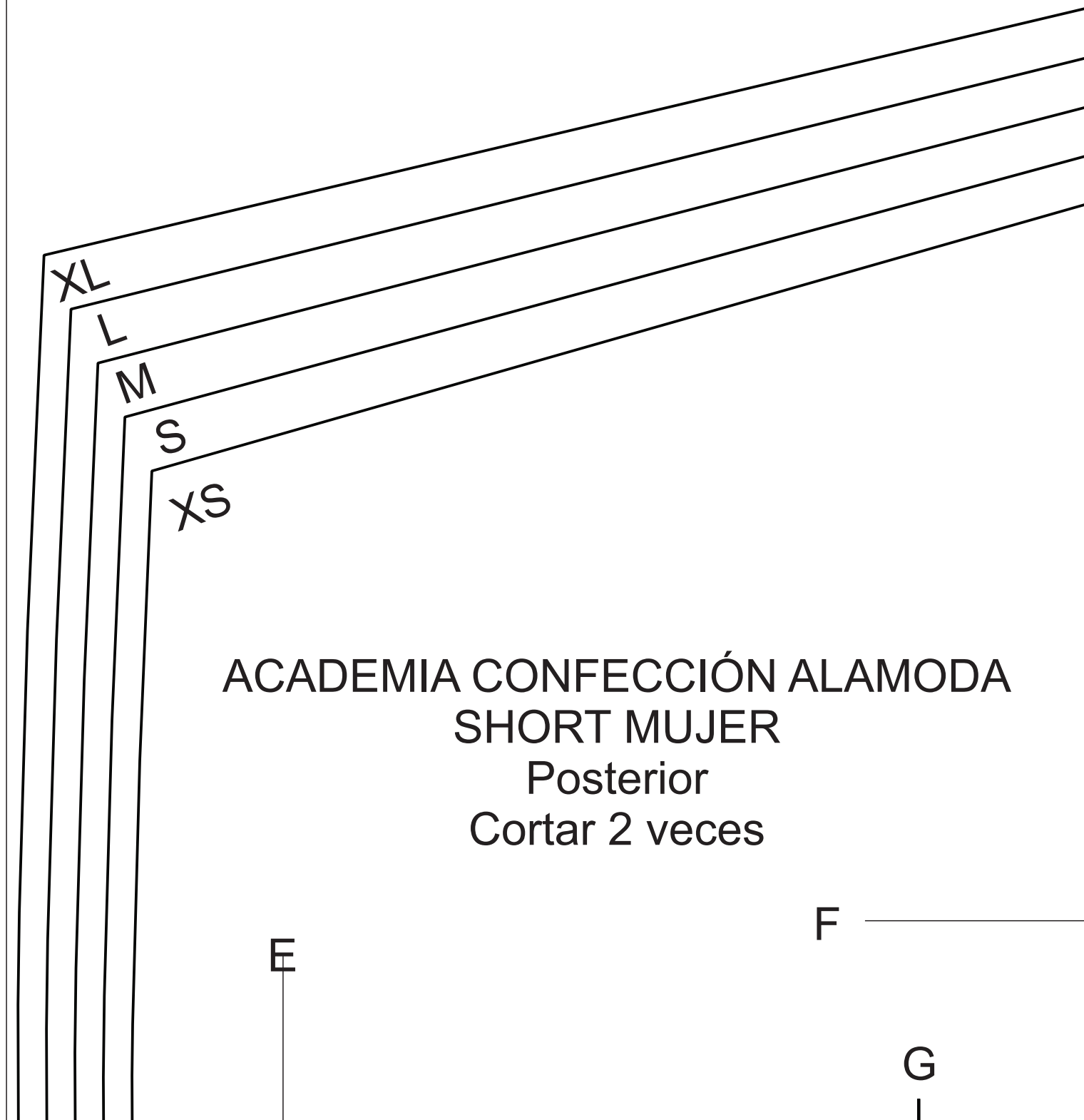
D



C

D



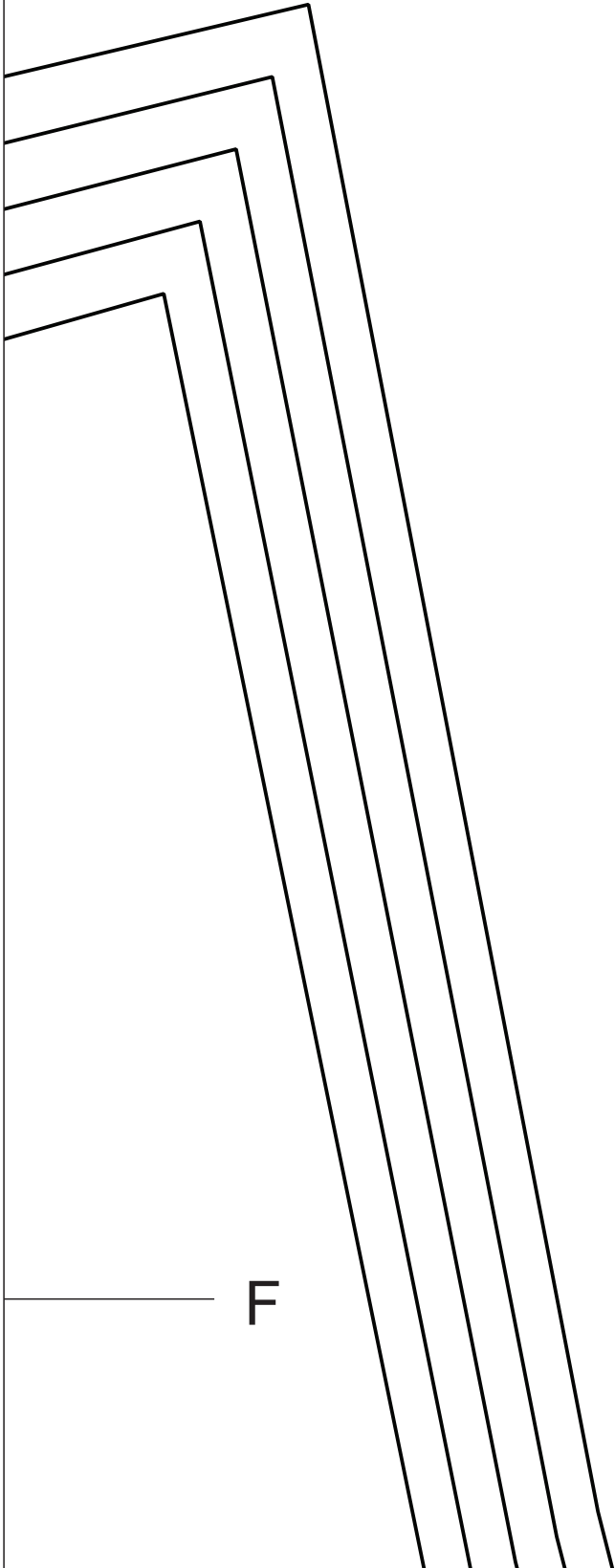


ACADEMIA CONFECCIÓN ALAMODA
SHORT MUJER
Posterior
Cortar 2 veces

E

F

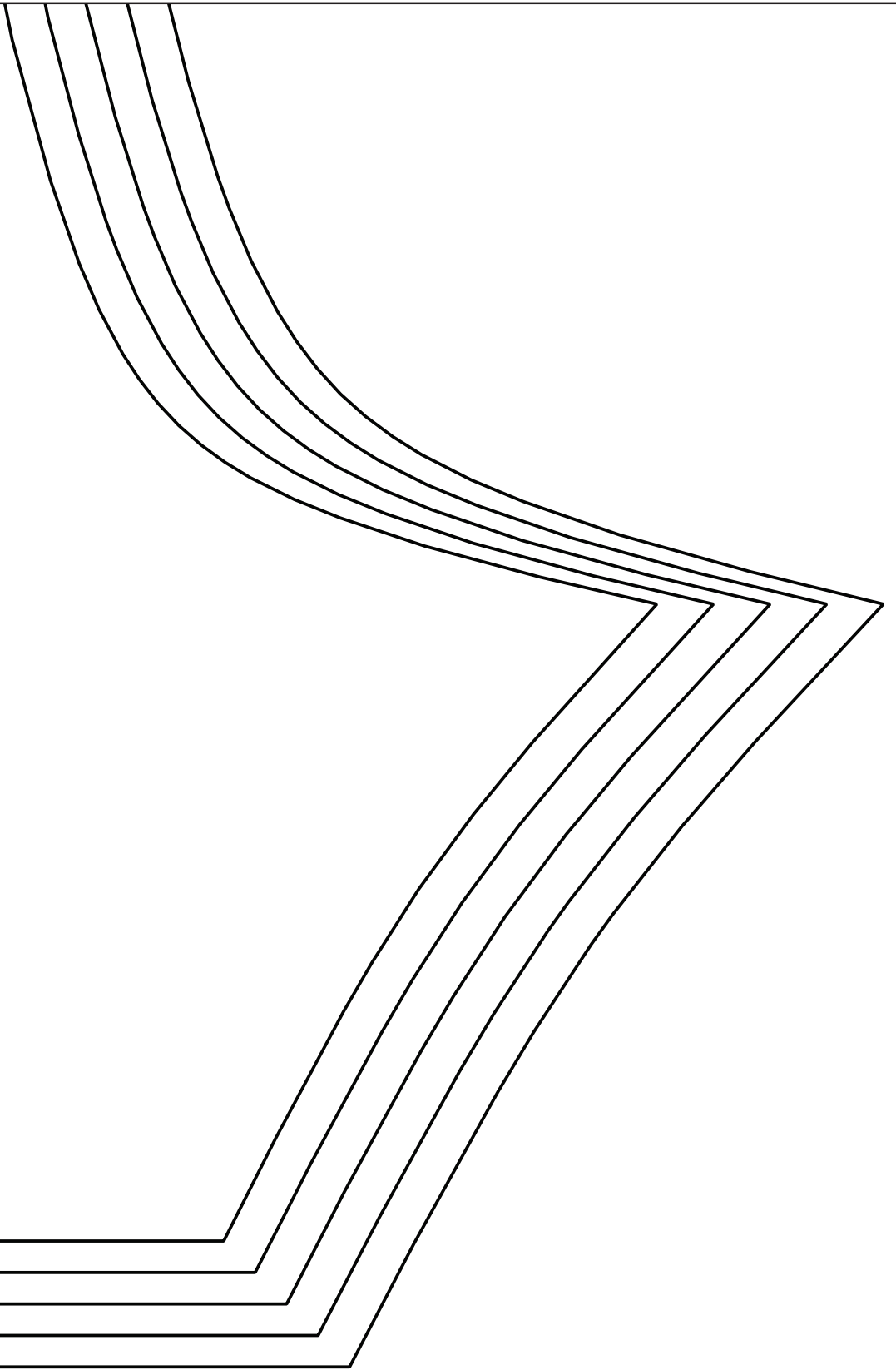
G



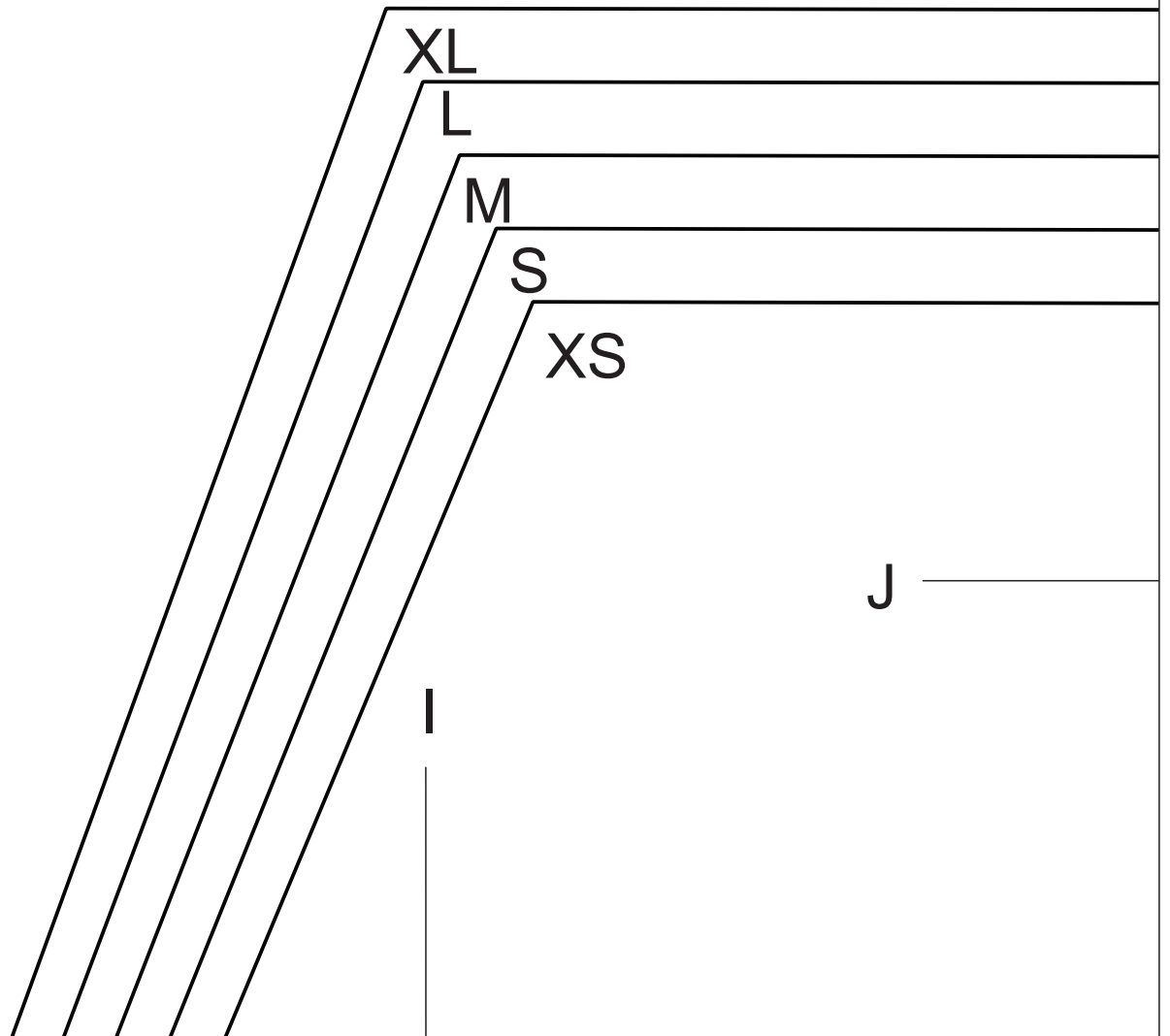
E

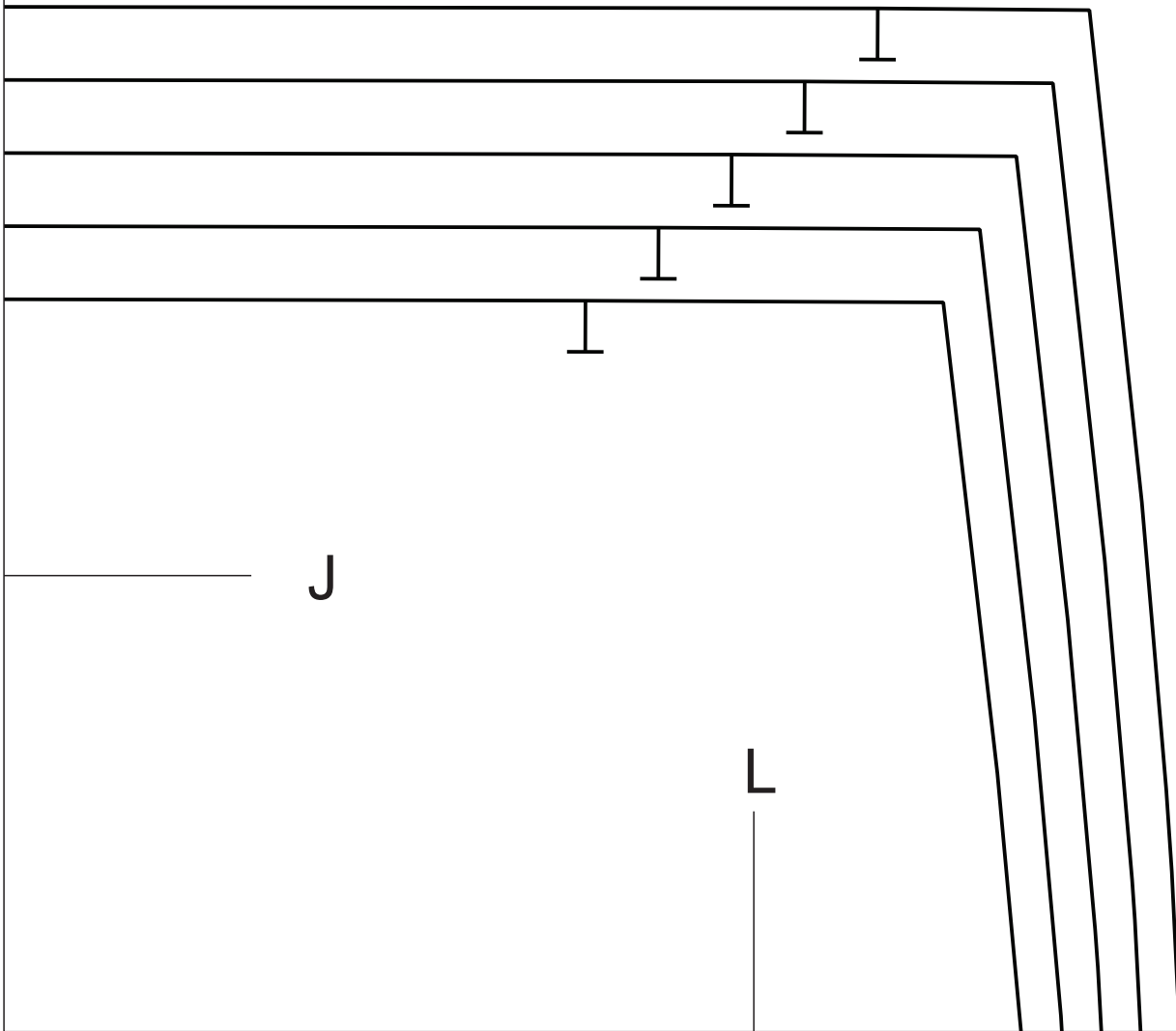
G

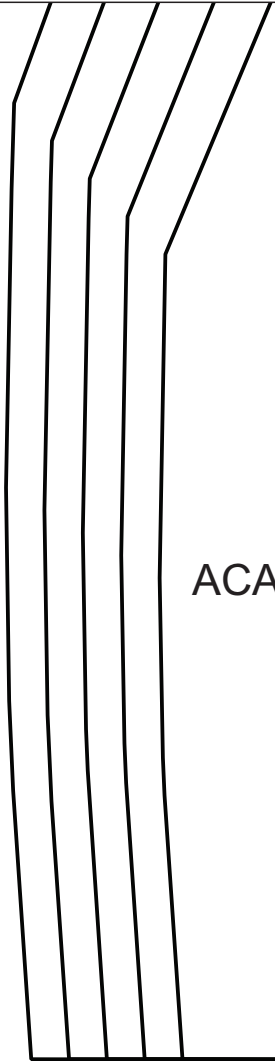
H



H

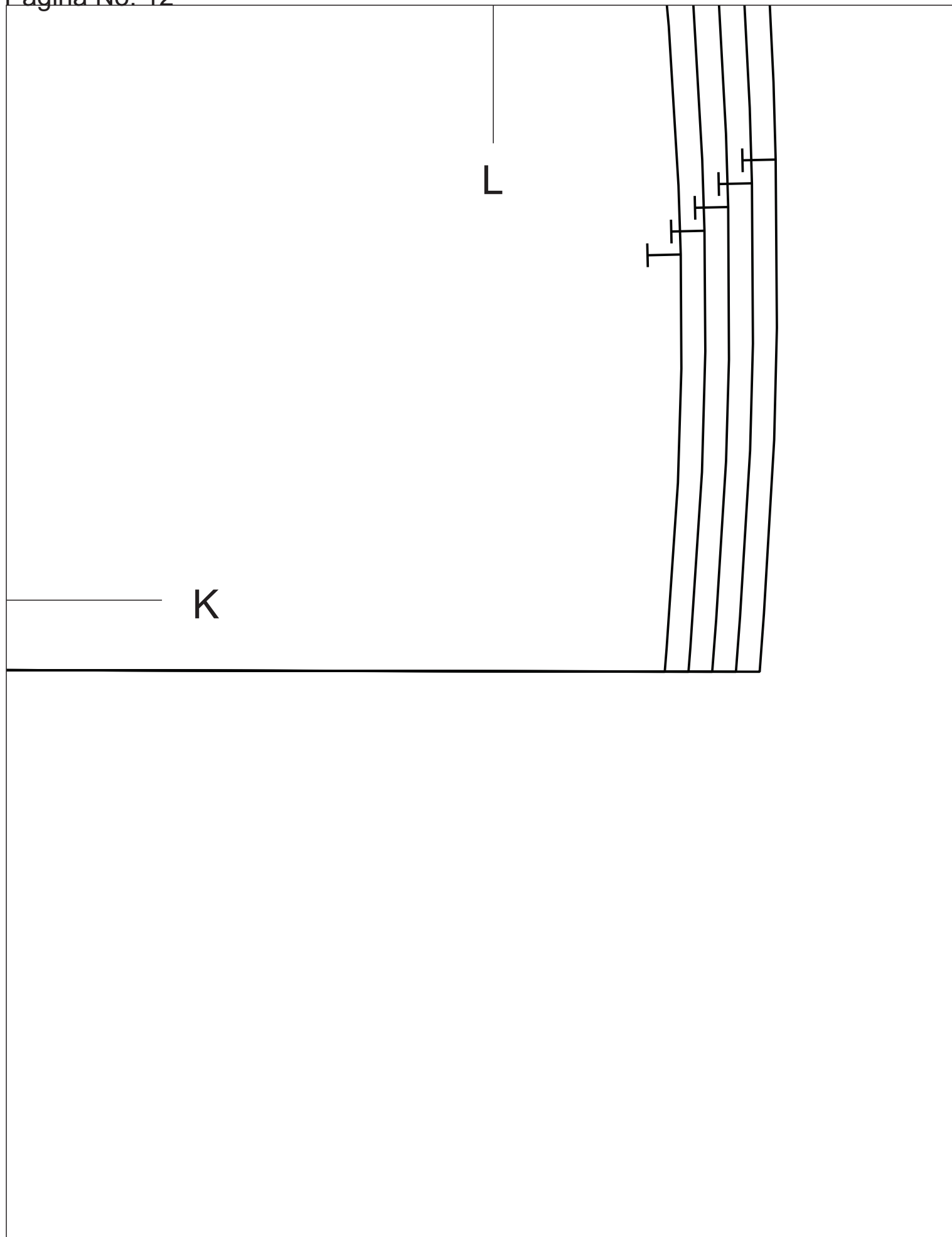






ACADEMIA DISEÑO Y CONFECCIÓN ALAMODA
SHORT MUJER
Bolsillo
Cortar 2 veces

K —————



M

ACADEMIA DISEÑO Y CONFECCIÓN ALAMODA
SHORT MUJER

Pretina

Cortar 1 vez

Doblez de tela

| |
|----|
| XL |
| L |
| M |
| S |
| XS |

M