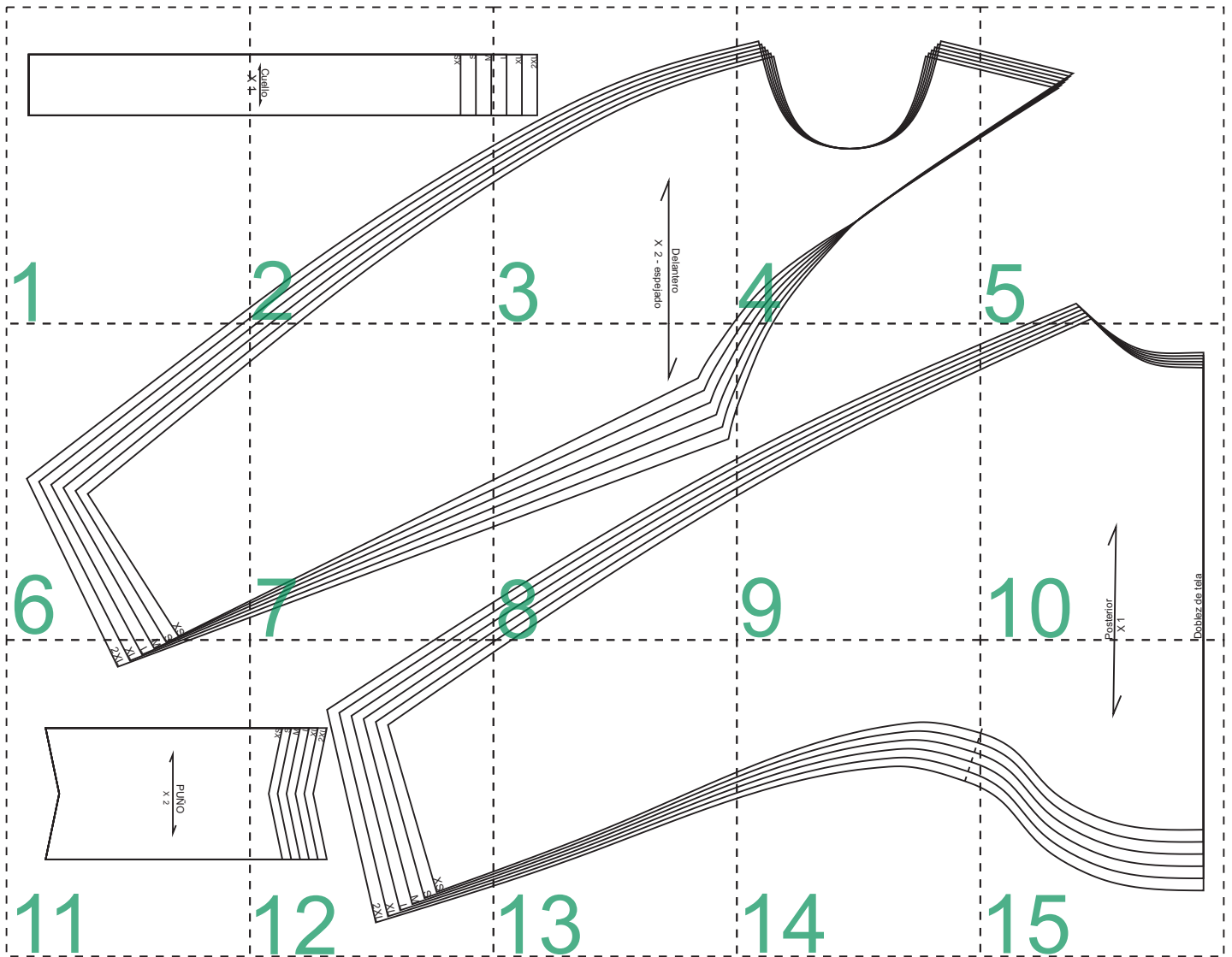
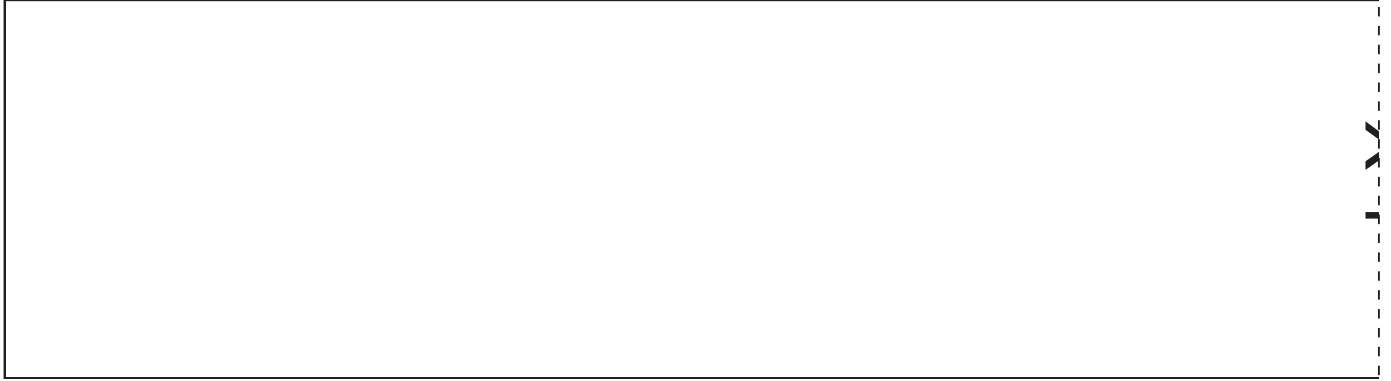


ACADEMIA ALAMODA
Buzo torero



www.academiaconfeccionalamoda.com
academia.alamoda@outlook.com



Cuello
X 1

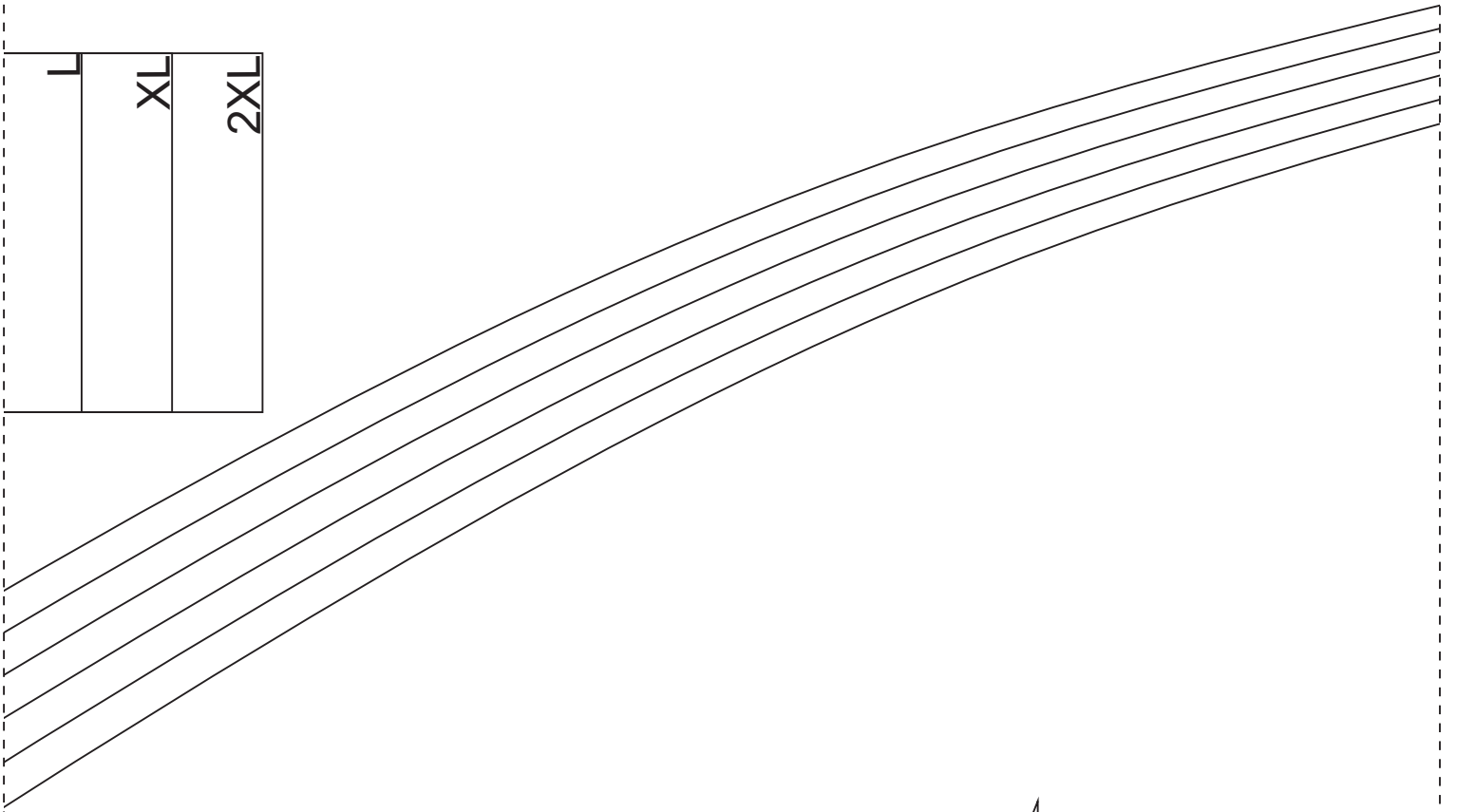
XS

S

M

2

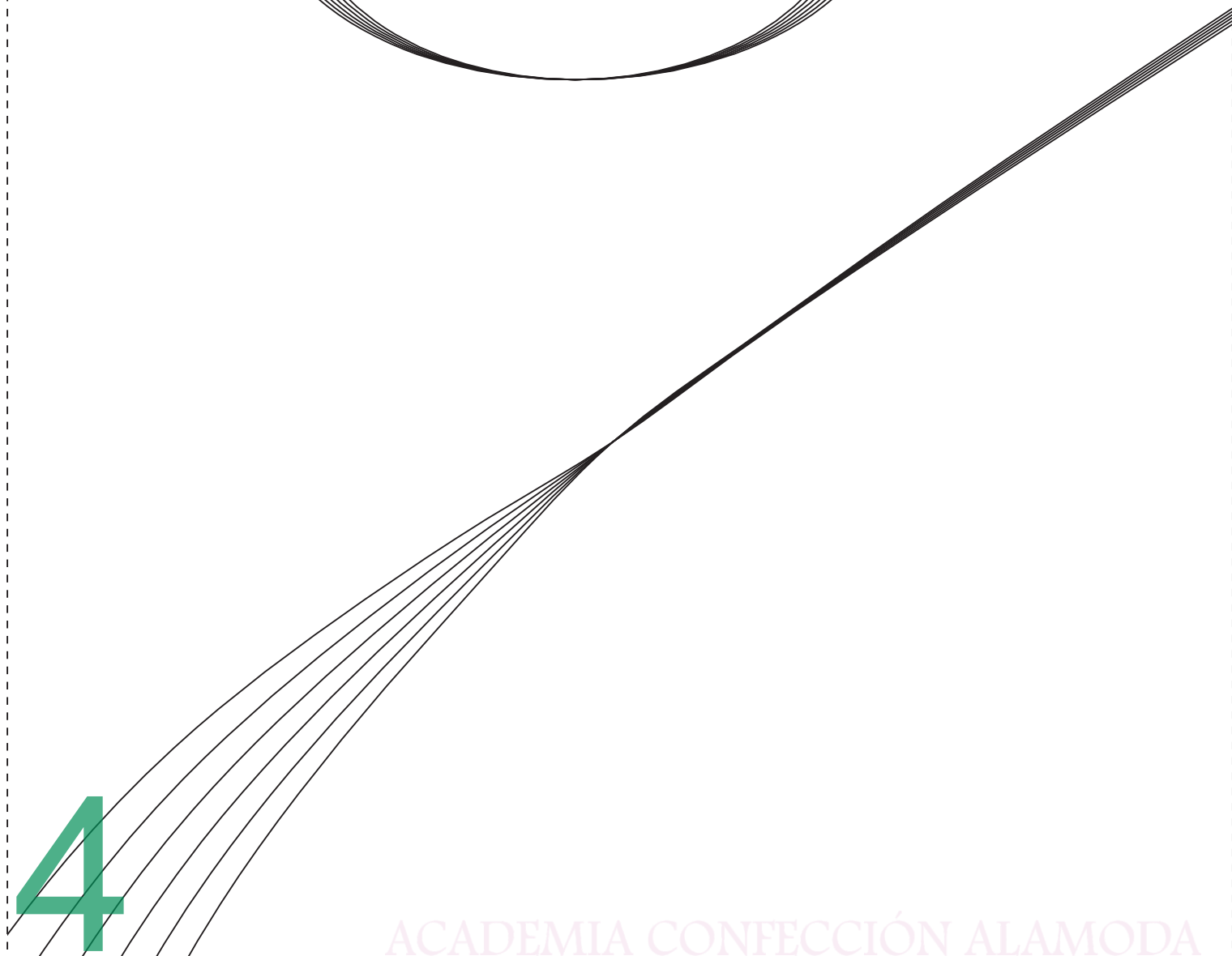
L
XL
2XL



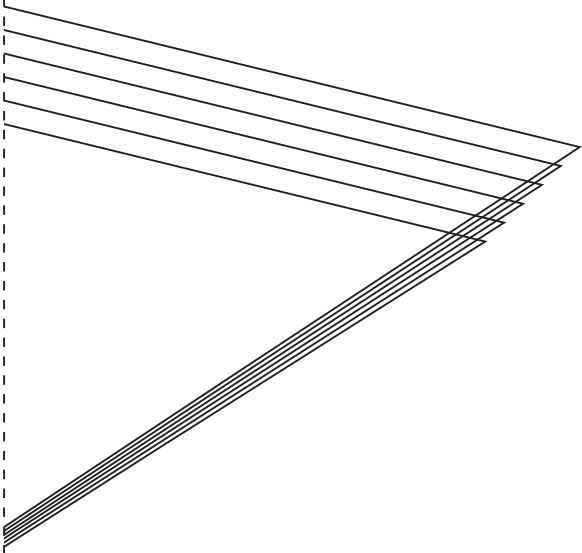
Delantero

X 2 - espejado

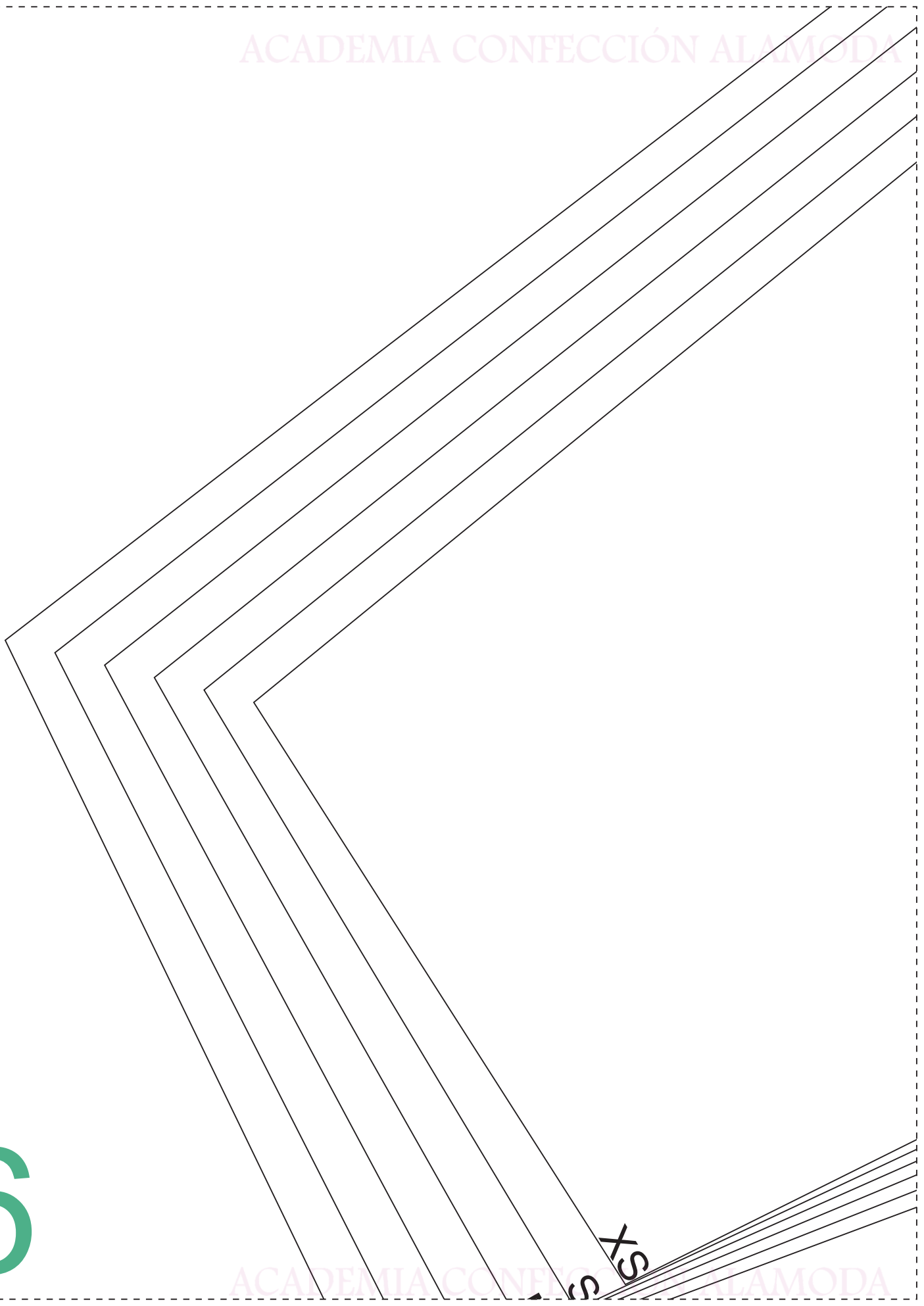
3

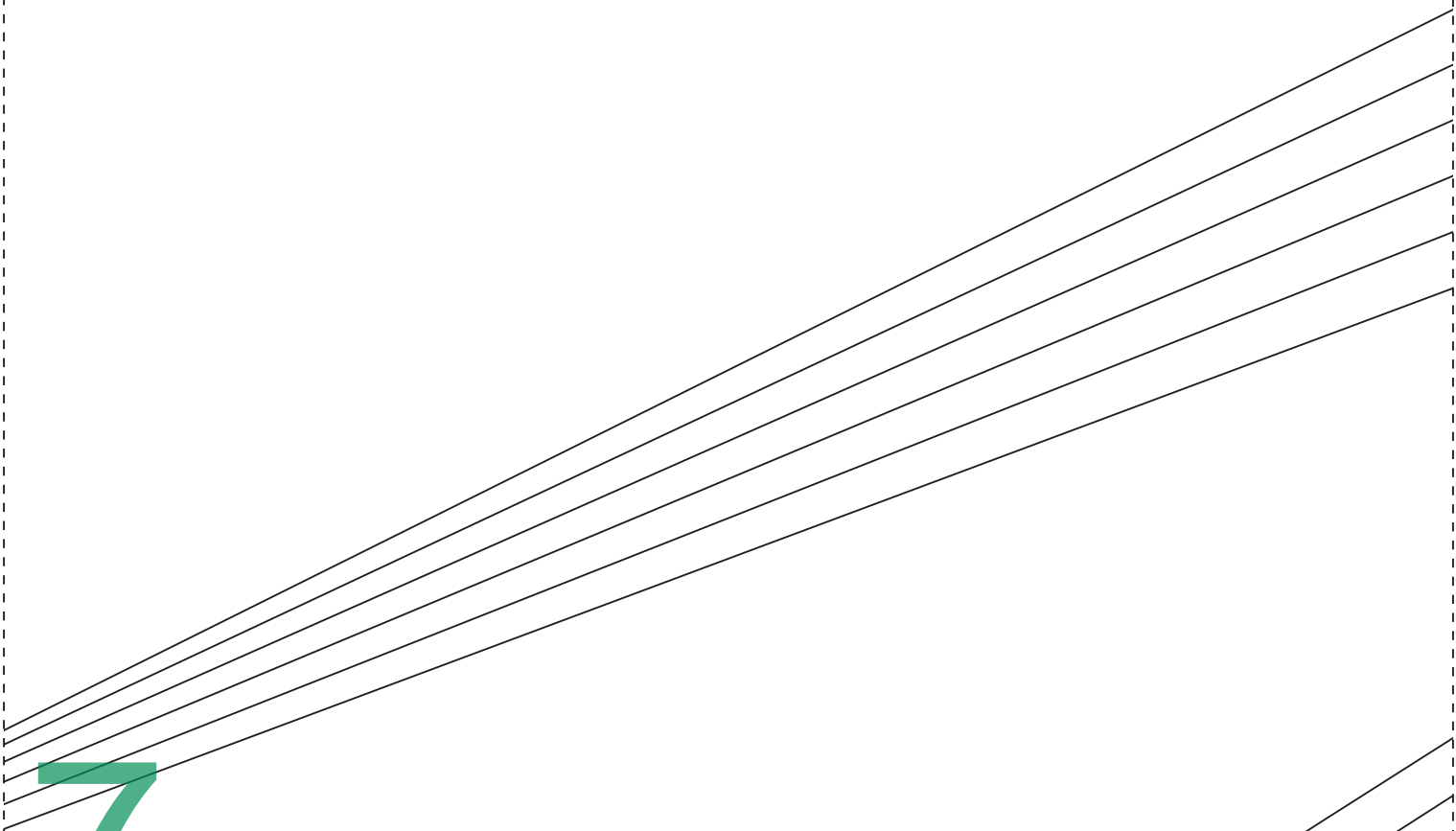


4

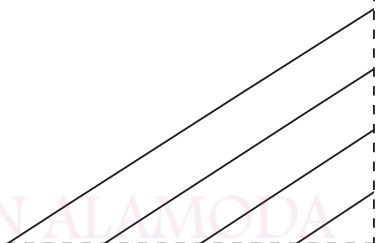


6



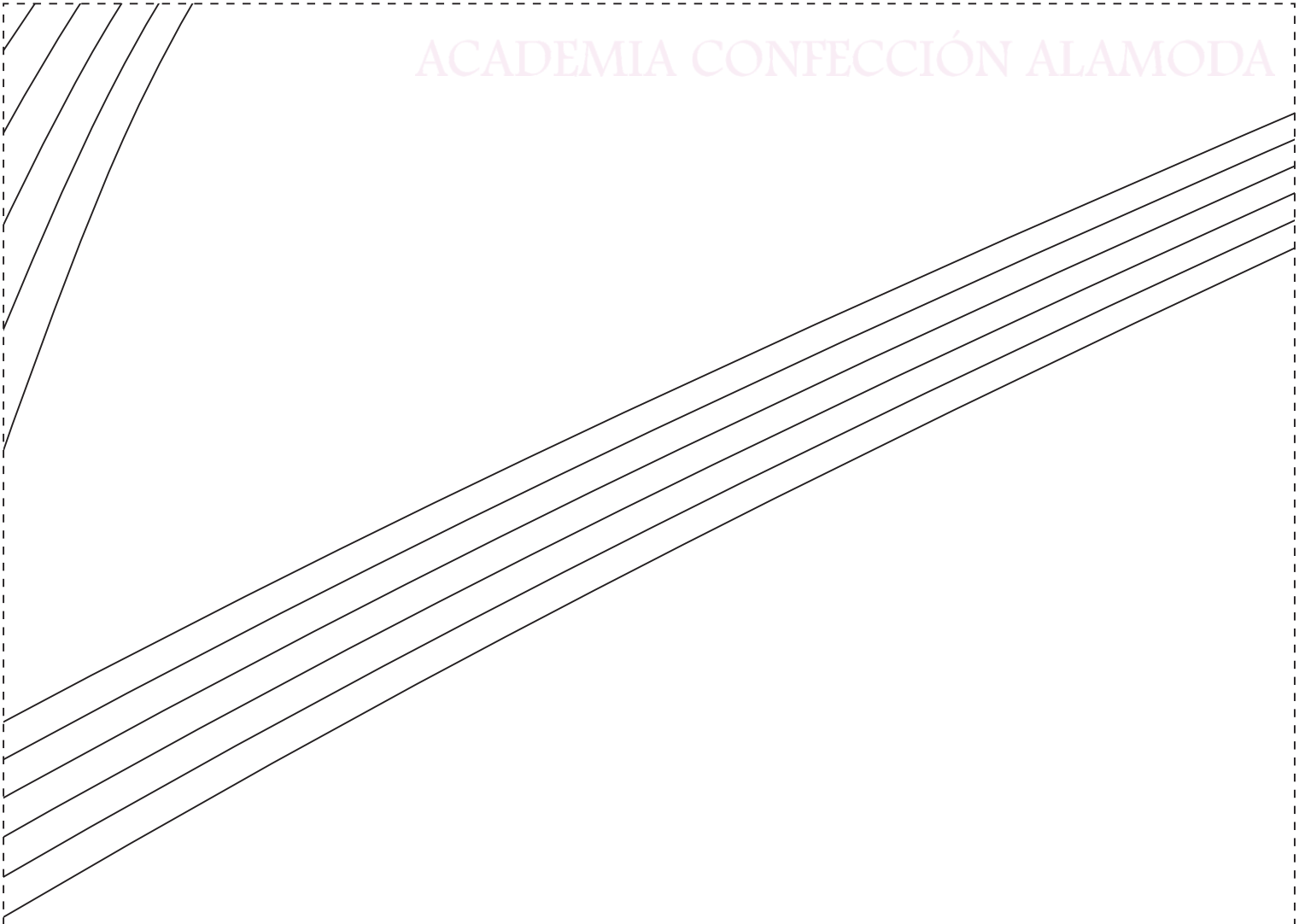


7





Handwriting practice area with multiple sets of slanted lines for letter tracing. The lines are arranged in two main groups: a top group with five lines and a bottom group with five lines. Each line is slanted upwards from left to right. The entire page is enclosed in a dashed border.





10

Posterior

X 1

Doblez de tela

